



30616 Bryant Drive, Evergreen, CO 80439

**Certificate of Analysis**  
Prepared for:

CBD Genesis

**Product Description:** Hemp CBD Cocoa Butter Lotion 1000mg CBD/2oz DIW, OVCO, EWX, OCOB, OEVO, OCO2, VTE, OPTE, AEP, OPT, TCA, KSO, OCML

**Invoice Number:** 2022-548.2

**Lot Number:** LTN-22822-B1

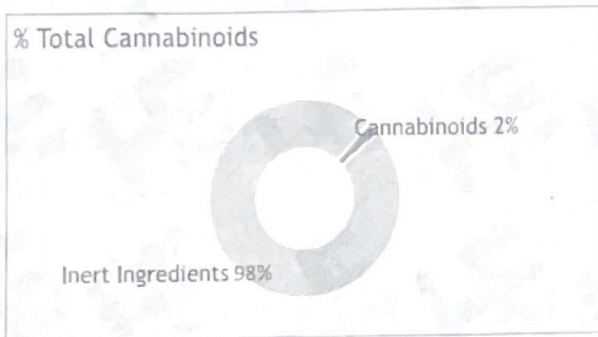
**Manufacture Date:** Aug 16, 2022

**Product Code:** LTN-1000-OCO2-COB2-OPTE-56.7

**Date of Analysis:** Aug 18, 2022

**Best By Date:** Aug 16, 2024

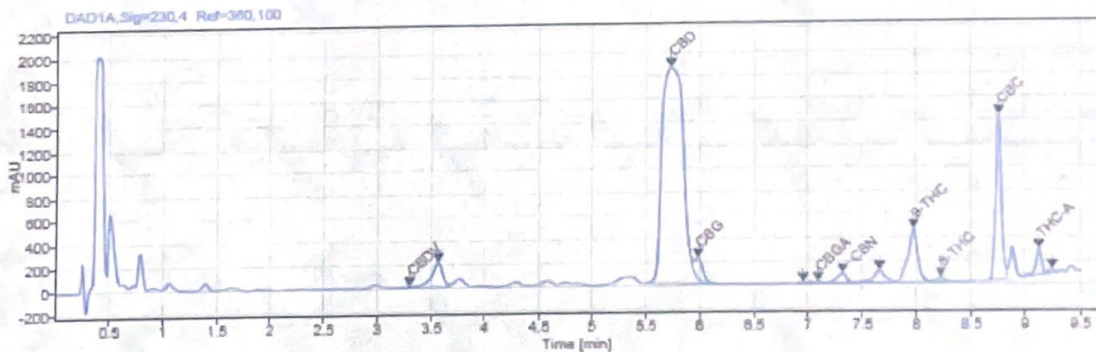
**Cannabinoid Potency - Expected CBD: 17.64 mg/g ± 10%**



	mg/g	%	LOQ (mg/g)
<b>Total CBD:</b>	20.10 mg/g	2.01%	0.05 mg/g
CBD:	20.10 mg/g	2.01%	0.05 mg/g
CBDa:	<LOD	<LOD	0.05 mg/g
d9-THC:	0.70 mg/g	0.07%	0.05 mg/g
CBC:	0.64 mg/g	0.06%	0.05 mg/g
CBG:	0.25 mg/g	0.03%	0.05 mg/g
CBGa:	<LOQ	<LOQ	0.05 mg/g
CBN:	0.06 mg/g	0.01%	0.05 mg/g
CBDV:	<LOQ	<LOQ	0.05 mg/g
d8-THC:	0.07 mg/g	0.01%	0.05 mg/g
THCa:	0.17 mg/g	0.02%	0.05 mg/g
<b>Density:</b>	1.000 (kg/m <sup>3</sup> )	<b>Specific Gravity:</b>	1.003

\*Total d9-THC and CBD are calculated taking into account the loss of a carboxyl group during decarboxylation.  
The formulas are as follows: d9-THC = d9THC + (THCa \* (0.877))    CBD = CBD + (CBDa \* (0.877))  
\*\*Any compounds with results listed as "<LOD" were below the Limit of Detection and were not detected.  
\*\*\*LOQ is the limit of quantitation for any given analyte.

**Chromatogram**



**Prepared By:** N. Stasi  
Operations Manager  
Aug 24, 2022

**Reviewed By:** E. Casey  
Formulation and R&D Manager  
Aug 24, 2022

Analyzed via HPLC Under These Conditions: Humidity: 42%    Temperature: 73.3 °F



ISO 9001:2015 Certificate Number: US4293

*Certificate of Analysis test results are based only on the analysis of the product listed in the "Product Description" of this form. Hammer Enterprises, LLC, makes no claims as to the efficacy, safety, or other risks associated with any detected or non-detected compounds reported herein. All analysis conducted at Hammer Enterprises, LLC, is performed using well-maintained, quality instruments utilizing Good Laboratory Practices and validated methodology. This Certificate may not be reproduced except in full, without the written approval of Hammer Enterprises, LLC. DISCLAIMER: When reviewing certificate ensure watermark is complete and intact. Watermark will present as repeating HE logos diagonally across the entire page. The authenticity of this document is not guaranteed if there is evident modification, blocking, or alterations of the watermark.*